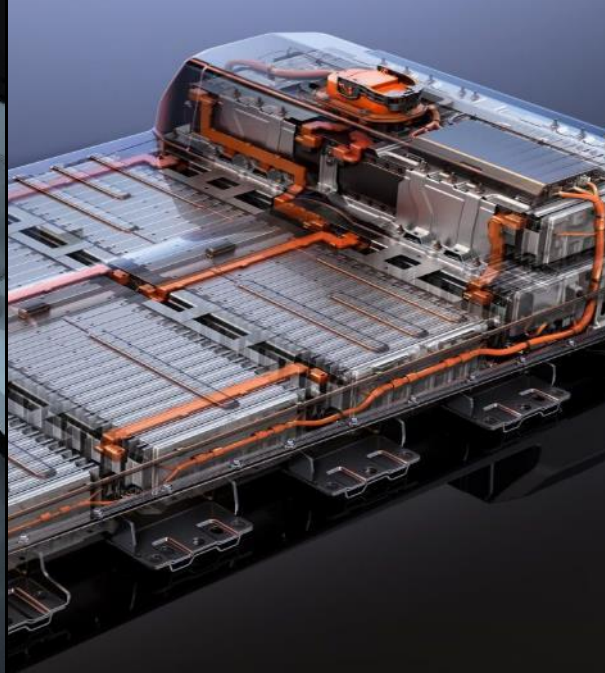
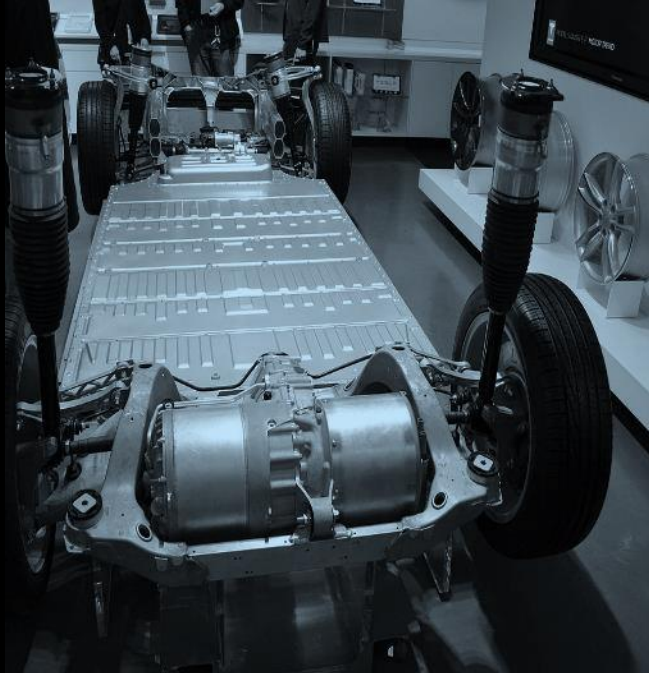




SC°Z | NE'

المنطقة الاقتصادية
القناة السويسية
SUEZ CANAL ECONOMIC ZONE

“ SCZONE'S STRATEGY TO ATTRACT INVESTMENT AND LOCALIZE INDUSTRIES ”



WHY EGYPT ?



“Egypt has always been a key player in the region given its strategic location, population, historical and cultural influence. The immense efforts undertaken by the government since 2014 have restored Egypt’s regional and international leverage and have enabled it to reinforce its significant role and fulfill its responsibilities”

H.E. President Abdel Fattah El-Sisi
President of the Arab Republic of Egypt



WHY EGYPT ?



2nd —

Highest GDP in Africa
& currently estimated at **USD 350 Bn**



2nd —

Highest population in in Africa,
Highest in ME (over **100 Mn** people)



1st —

Domestic consumer market
in ME & Africa



2.8% —

Growth rate in 2020-2021
despite the **covid-19 pandemic crisis**



B⁺ ^{Rating} —

Economic Outlook Stable;
Fitch Affirms Egypt at '**B+**' (20 Oct 2021)

Source: African Economic Outlook (AEO) 2021
Egypt economic indicators – Cabinet of ministers, Sunday 11 July 2021
Fitch Ratings - Hong Kong - 20 Oct 2021



WHY EGYPT ?

↔ Ease of Connectivity

The Egyptian new road network extends regionally to Africa



WHY EGYPT ?

Markets Accessibility

- ❑ Benefiting from multiple free trade agreements guaranteeing accessibility to a large international markets of nearly 2 Bn consumer
- ❑ In addition to accessing the domestic market of over 100 Mn consumer

100%
Exemption of customs
with Free
Trade Agreements

2 Bn
consumer

100 Mn
in Egypt



SCZONE

REGIONAL CONTEXT

SCZONE is A promising investment zone Located around the global trade route (Suez Canal) where:

12%

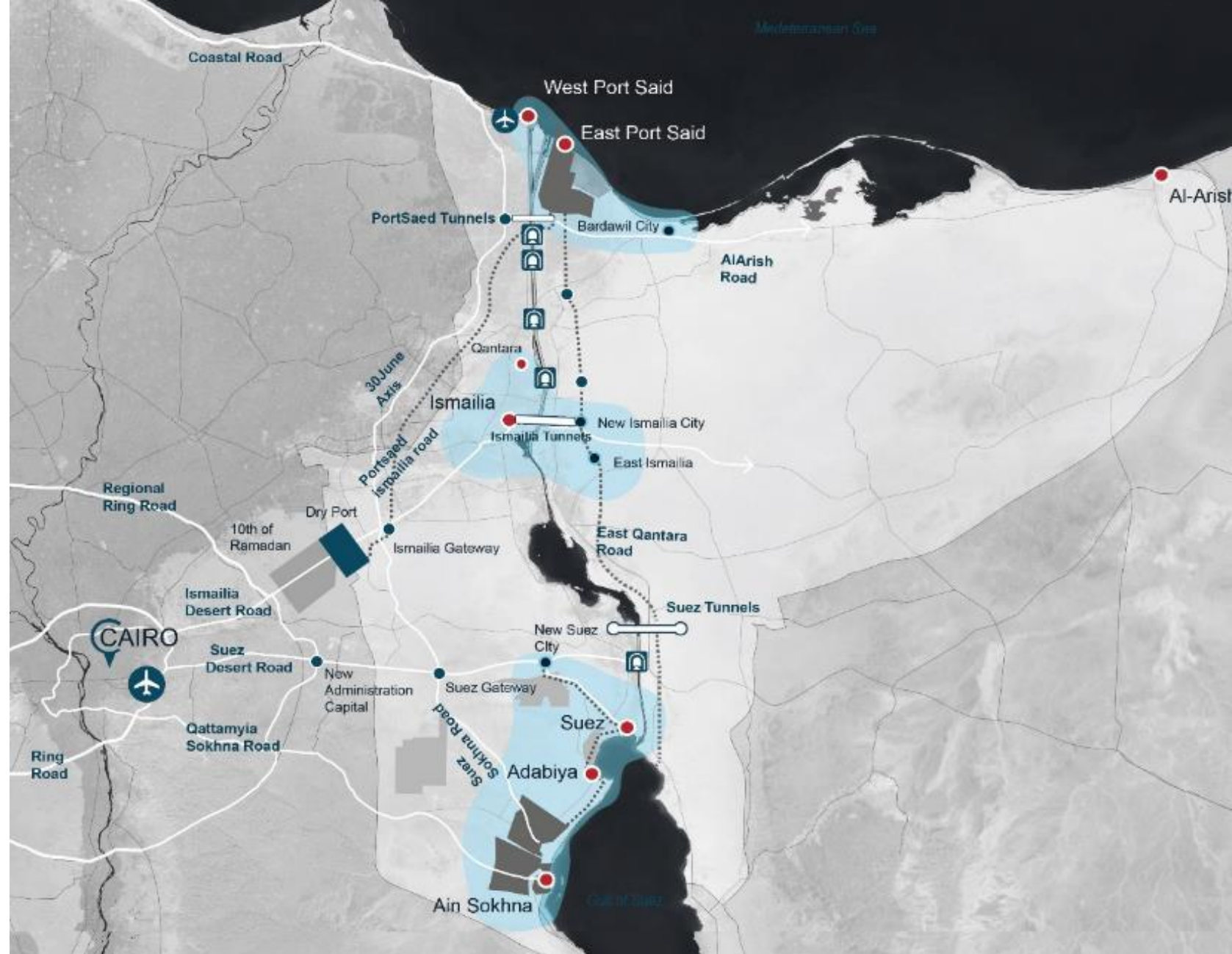
INTERNATIONAL TRADE

10%

SEABORNE TRADE

18,000

SHIPS / YEAR



WHY?

THE ZONE

INVESTMENT GATE

VISION 2025

CREATING OPPORTUNITIES



SCZONE VISION

*Become a leading world-class economic hub
and a preferred destination for investment
while contributing to the creation of quality
jobs in Egypt*

SCZONE STRATEGIC MASTER PLAN (2030)

The SCZONE was established in 2015
with a three-phases strategic plan



FACTS



6
PORTS



4
INDUSTRIAL
ZONES

3

MAIN PORTS
OPERATORS

461 KM²
TOTAL AREA

14

INDUSTRIAL
DEVELOPERS

100K

DIRECT JOB
OPPORTUNITIES

250

OPERATIONAL
ESTABLISHMENT



WHY?
❏

THE ZONE
❏

INVESTMENT GATE
❏

VISION 2025
❏

CREATING OPPORTUNITIES
❏

DOMESTIC CONNECTIVITY

SCZONE is well connected to the new modern road network of Egypt, also connect directly with the new Suez Canal tunnels which facilitates transportation between its two banks.



WHY?

THE ZONE

INVESTMENT GATE

VISION 2025

CREATING OPPORTUNITIES



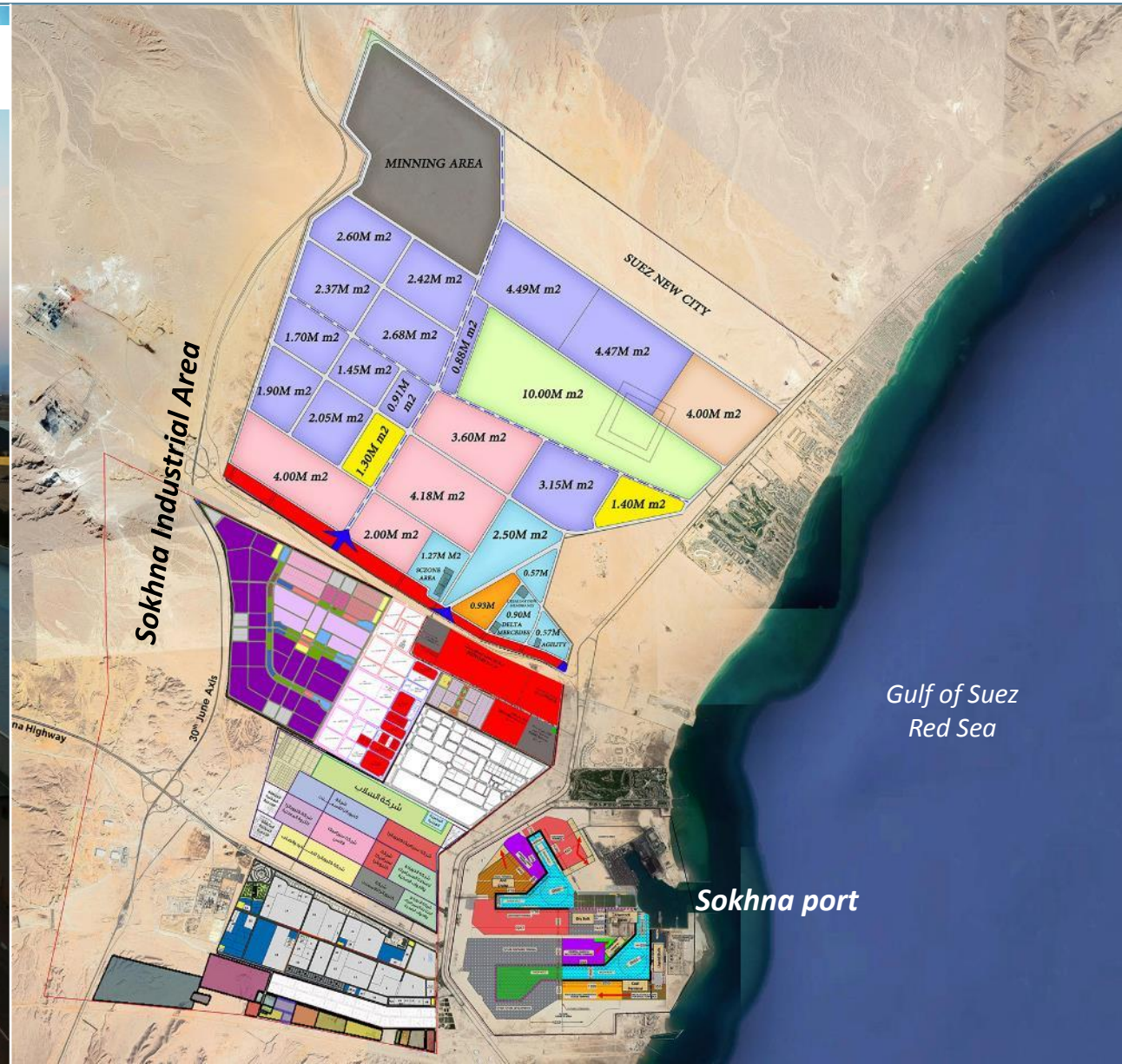
SOKHNA INTEGRATED ZONE

29°39'12"N 32°18'37"E

 SOKHNA
 INDUSTRIAL ZONE
 المنطقة الصناعية
 السخنة

“One of the World’s largest industrial and port complexes with 210 KM² integrated industrial and logistic area directly connected to Sokhna Port.”

TEDA Plug & Play Factories



JUSHI Fiber Glass Factory



Siemens Technical Academy (EGTA)





SOKHNA INTEGRATED ZONE

29°39'05"N 29°39'05"E
SOKHNA
PORT
ميناء
السخنة

“Sokhna port is Egypt’s main gateway on the Red Sea with a total area of 23 KM²”



Industrial Area

Laboratory

Second Basin – Phase 2

Fourth Basin

Logistic Area

Sixth Basin

Second Basin – Phase 1

First Basin

Livestock

Sugar Factory

Fifth Basin

Third Basin

Power Station

Liquid Bulk T 2

Liquid Bulk T 1

Current Status
Ongoing Development



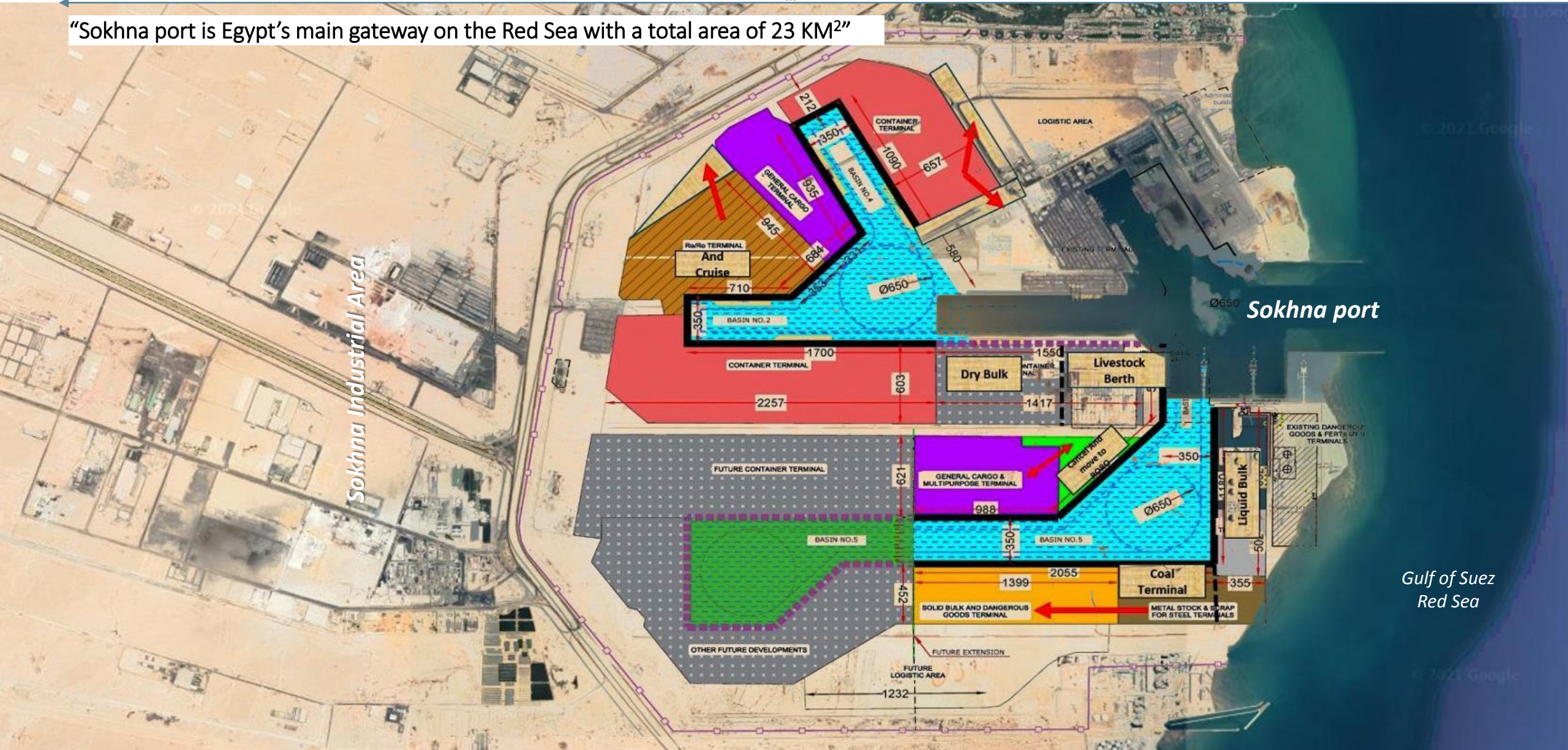
SOKHNA INTEGRATED ZONE



SOKHNA
PORT
ميناء
السخنة

29°39'05"N 29°39'05"E

“Sokhna port is Egypt’s main gateway on the Red Sea with a total area of 23 KM²”



Sokhna Industrial Area

Sokhna port

Gulf of Suez
Red Sea

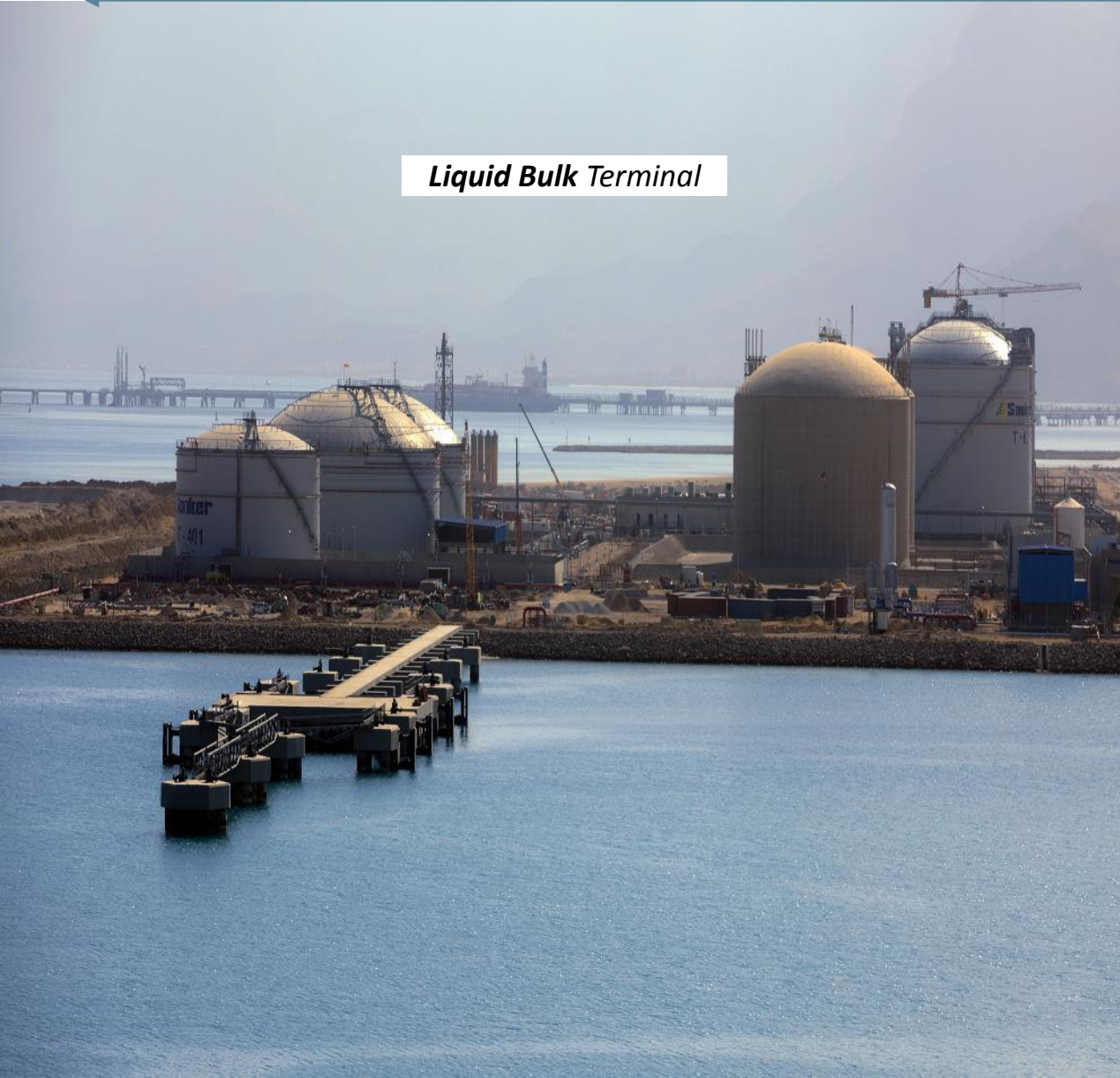
DPW Container Terminal (1)



DPW Container Terminal (2)



Liquid Bulk Terminal



Ongoing development





EAST PORTSAID INTEGRATED ZONE

A promising investment area at the northern entrance of the Suez Canal comprising of logistics & industrial zones with a total area of 63 KM², integrated with East Port-Said Port.



31°06'56"N 32°22'18"E
EAST → PORTSAID
INDUSTRIAL ZONE
المنطقة الصناعية
شرق بورسعيد →



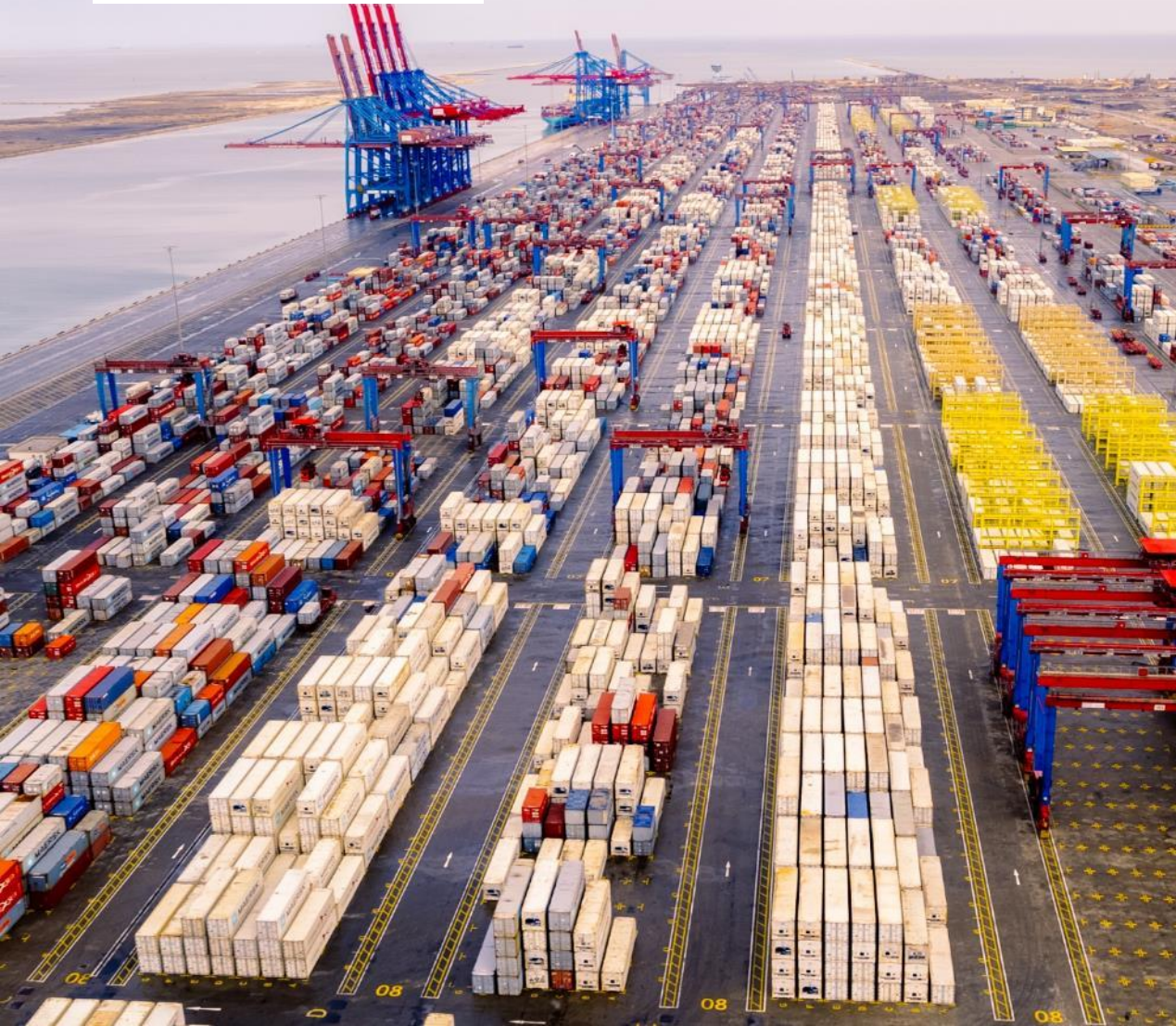


EAST PORTSAID INTEGRATED ZONE

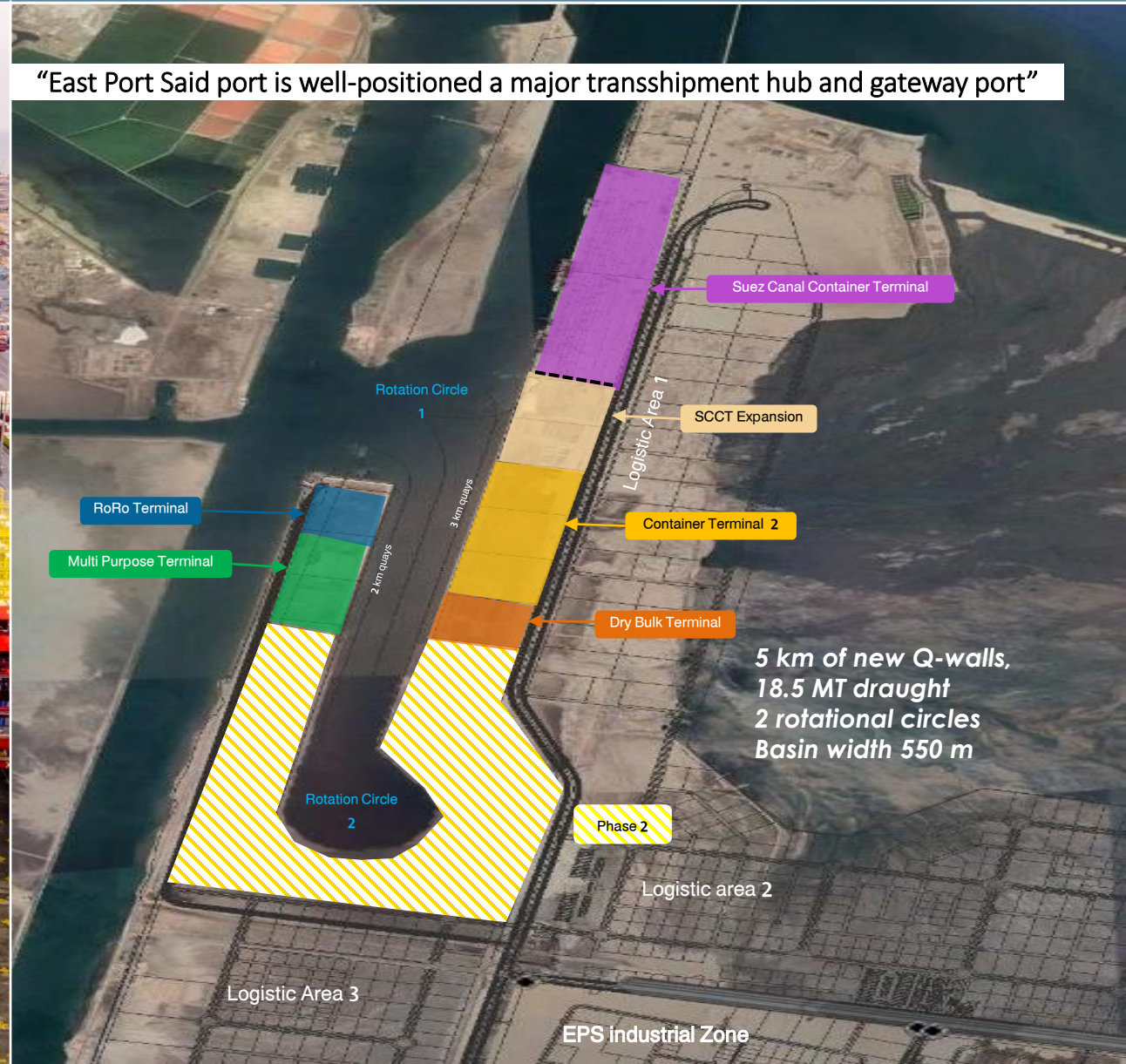


EAST →
PORTSAID PORT
ميناء شرق بورسعيد →

SCCT container terminal



“East Port Said port is well-positioned a major transshipment hub and gateway port”





EAST PORTSAID INTEGRATED ZONE



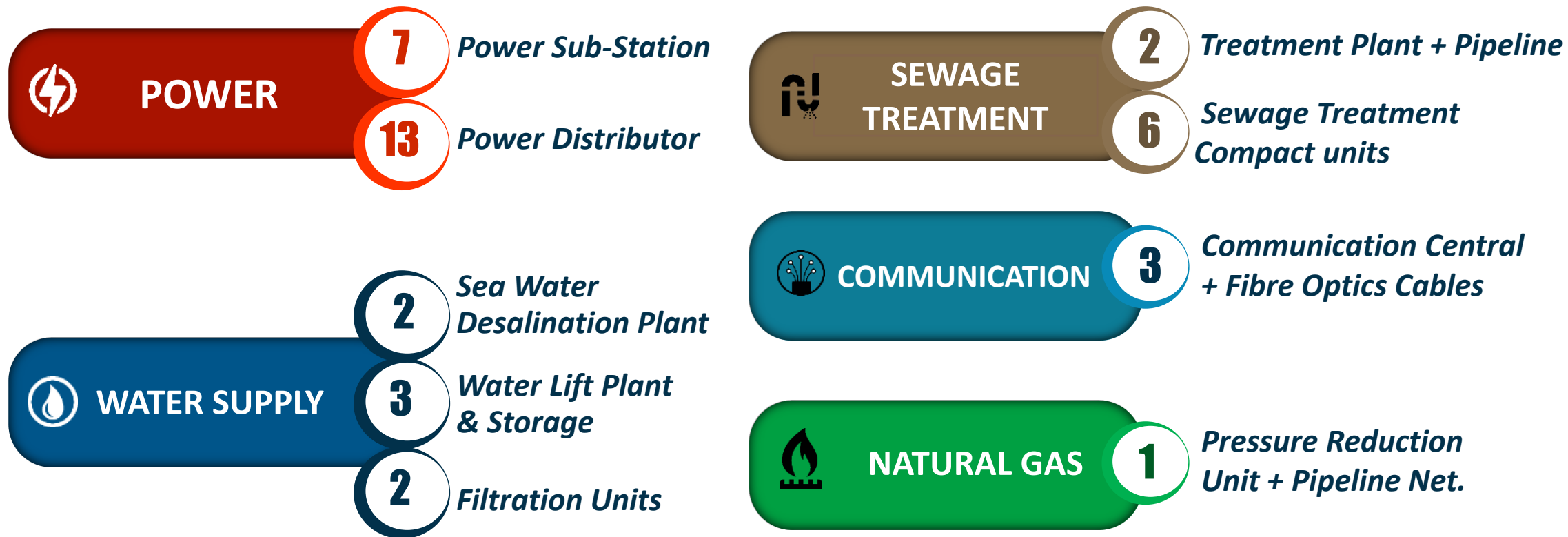
EAST →
PORTSAID PORT
ميناء شرق
بورسعيد →

SCCT container terminal : Maersk Line EEE ship



UTILITIES & INFRASTRUCTURE

(2.3 Bn \$)



UTILITIES & INFRASTRUCTURE

Sokhna Water Desalination Plant



UTILITIES & INFRASTRUCTURE

Sokhna Water Treatment Plant



UTILITIES & INFRASTRUCTURE

Sokhna Water Storage Tanks



UTILITIES & INFRASTRUCTURE



UTILITIES & INFRASTRUCTURE



East Port Said Industrial area Power Substation Plant

UTILITIES & INFRASTRUCTURE



EPS PORT Transformers Substation



UTILITIES & INFRASTRUCTURE



EPS PORT Roads & Tunnels



INCENTIVES & REGULATIONS



“We have the capabilities and facilities to make the investment at Suez Canal Economic Zone one of the most competitive and productive in the world”

Incentives <=>

"A Rich and Stimulating working Environment"

Custom Tax | 0%



Value Add Tax | 0%



Export & Import Regulation



Export Support Program



50% | Corporate Tax Exemption
(incentives for 7 Years)



Incentives to Labor-intensive Projects
using Local Component



New Customs Guide 2020
& Digital Transformation



5-year Residency Permit
to Foreign Investors



WHY?
⌘

THE ZONE
⌘

INVESTMENT GATE
⌘

VISION 2025
⌘

CREATING OPPORTUNITIES
⌘

SCZONE Strategy 2020-2025



SCZONE STRATEGIC MASTER PLAN (2030)

The SCZONE was established in 2015
with a three-phases strategic plan



SCZONE STRATEGY & OBJECTIVES

Create investment opportunities in industrial and maritime sectors

Localize targeted industries to substitute imports

Adopt industrial clusters policy

Apply a world-class infrastructure

Capitalize on SCZONE's role as a global logistics hub amid international supply chains

Dynamically contribute to Egypt's growth rate, while fostering SCZONE's position as an international Investment hub and an export platform with a distinctive access to Africa.

Target investments and attract international shipping lines to the ports

Introduce an effective mechanism for maritime services and bunkering facilities

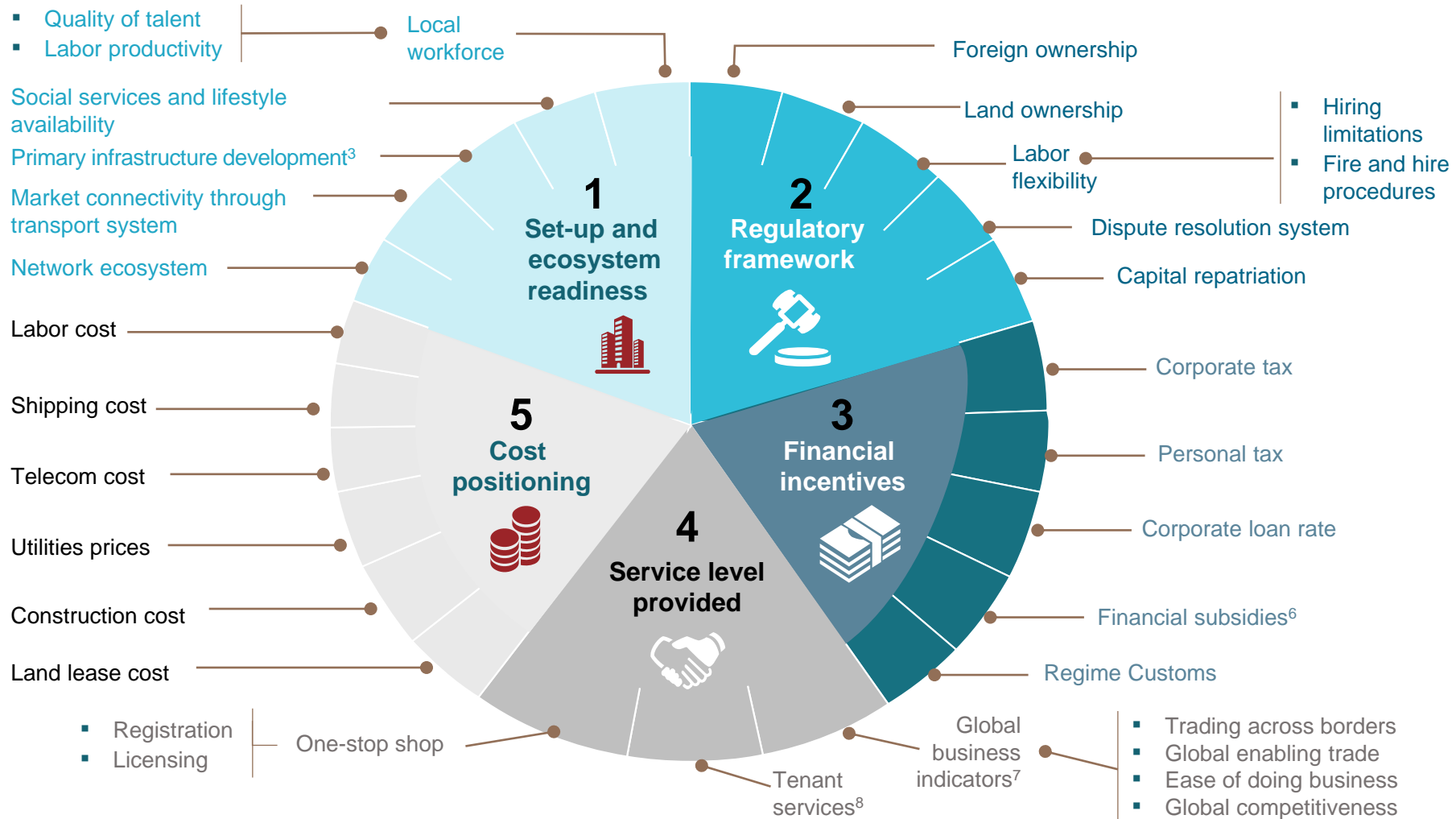
Develop platforms for small and medium enterprises

Establish financial, commercial and services centers

Launch a new business identity and organizational reforms



MAIN PILLARS FOR STRATEGY IMPLEMENTATION



**CREATING
OPPORTUNITIES**



SCZONE STRATEGIC MASTER PLAN (2030)

The SCZONE was established in 2015
with a three-phases strategic plan





TARGETED INDUSTRIES

Bunkering



Logistics



Data Centers



Rolling Stock



Automotive



Petrochemicals



Tires



Electric Batteries



Pharmaceutical



Pharma
(Active Substance)



Solar PV



Casting & Foundry



Building Materials



Textile



Agribusiness



WHY?



THE ZONE



INVESTMENT GATE



VISION 2025



CREATING OPPORTUNITIES



THANK YOU



SC°ZINE المنطقة الاقتصادية
القناة السويسية
SUEZ CANAL ECONOMIC ZONE

For further information,
Email: invest@sczone.eg
Web site: www.sczone.eg

